



KENWOOD
COMMERCIAL



CROWN ROLLER MILL

OFFICE SPACE FOR LEASE

105 S. 5th Avenue, Minneapolis, MN 55401

DETAILS

AVAILABILITY	Available July 1, 2025:
	4th Floor: 3,994 RSF
	Available NOW:
	1st Floor: 2,781 RSF SPEC SUITE
	4th Floor: 1,548 RSF
	6th-7th Floors: 27,583 contiguous RSF

NET RENT RATES	\$18.00 - \$25.00 PSF
-----------------------	-----------------------

2024 TAX/OPS	\$15.64 PSF
---------------------	-------------

BUILDING SIZE	98,334 RSF
----------------------	------------

FLOORS	7
---------------	---

YEAR BUILT	1890
-------------------	------

AMENITIES

Updated common areas, expansive outdoor deck

Great views of the Mississippi River, CBD, and Mill District

Located in the historic Whitney Mill Corridor

Close proximity to Minneapolis CBD, Mill Ruins Park, Stone Arch Bridge, Gold Medal Park, *new* Waterworks Park, several award-winning restaurants (including Owamni by the Sioux Chef, Kindee Thai, Smith & Porter, Sawatdee) and the renowned Guthrie Theater

On-site property management

On site and underground parking, adjacent access to multiple municipal ramps



Local Knowledge

Allows us to uncover unique opportunities for our clients in Minneapolis | St. Paul.



Independent Advantage

We provide personalized service and take the time to fully invest in our clients.



Full-Service

From start to finish: we're directly involved every step of the way.

CONTACT US

Nils Snyder

612.240.7967

nsnyder@kenwoodcommercial.com

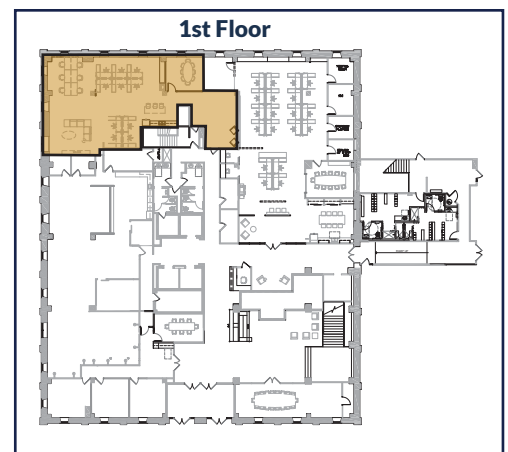
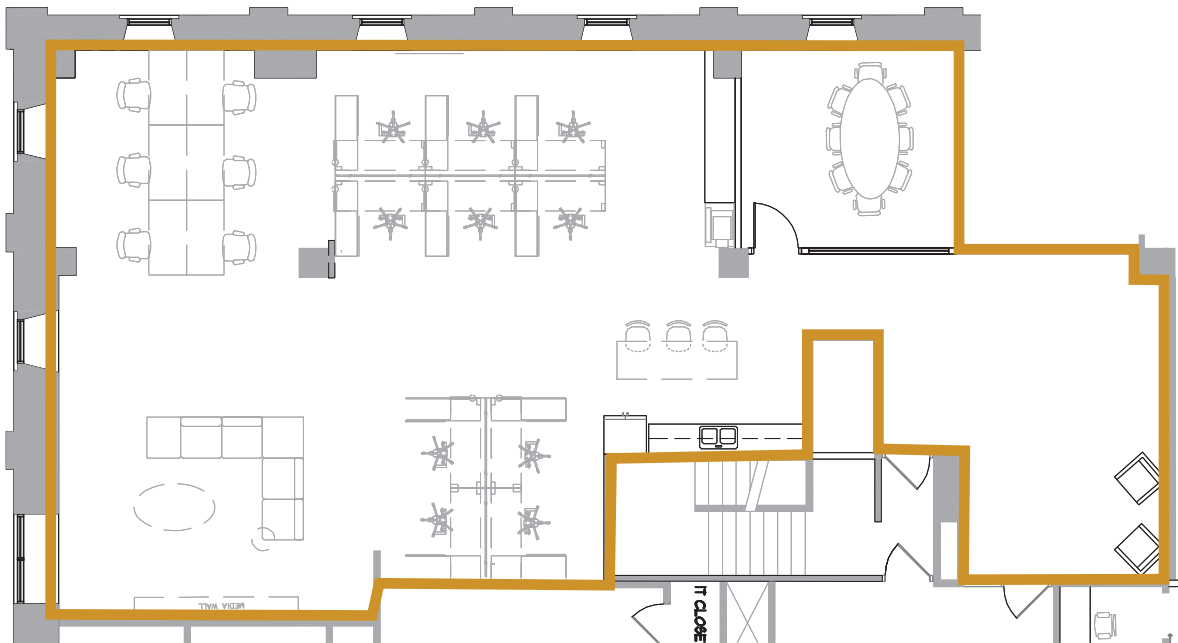
Michael Doyle

612.242.8820

mdoyle@kenwoodcommercial.com

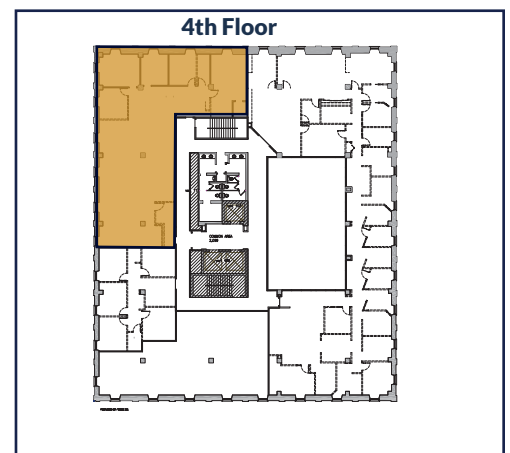
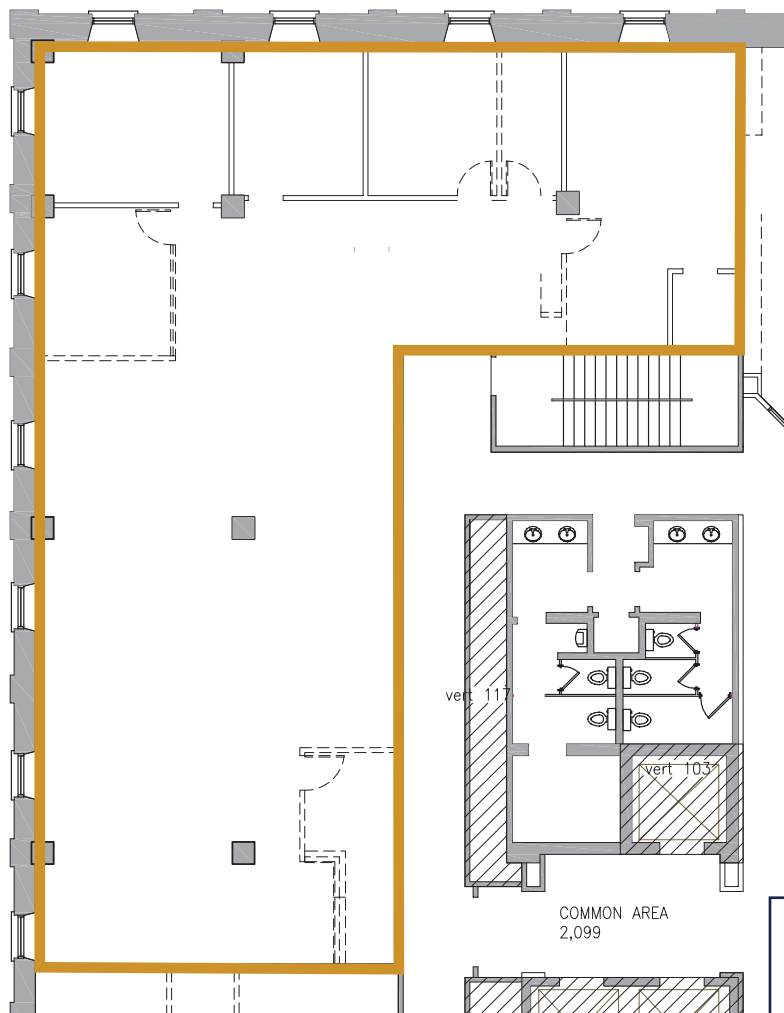
First Floor Spec Suite

2,781 RSF



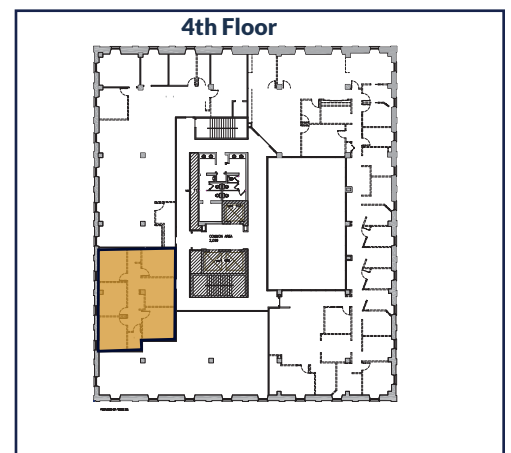
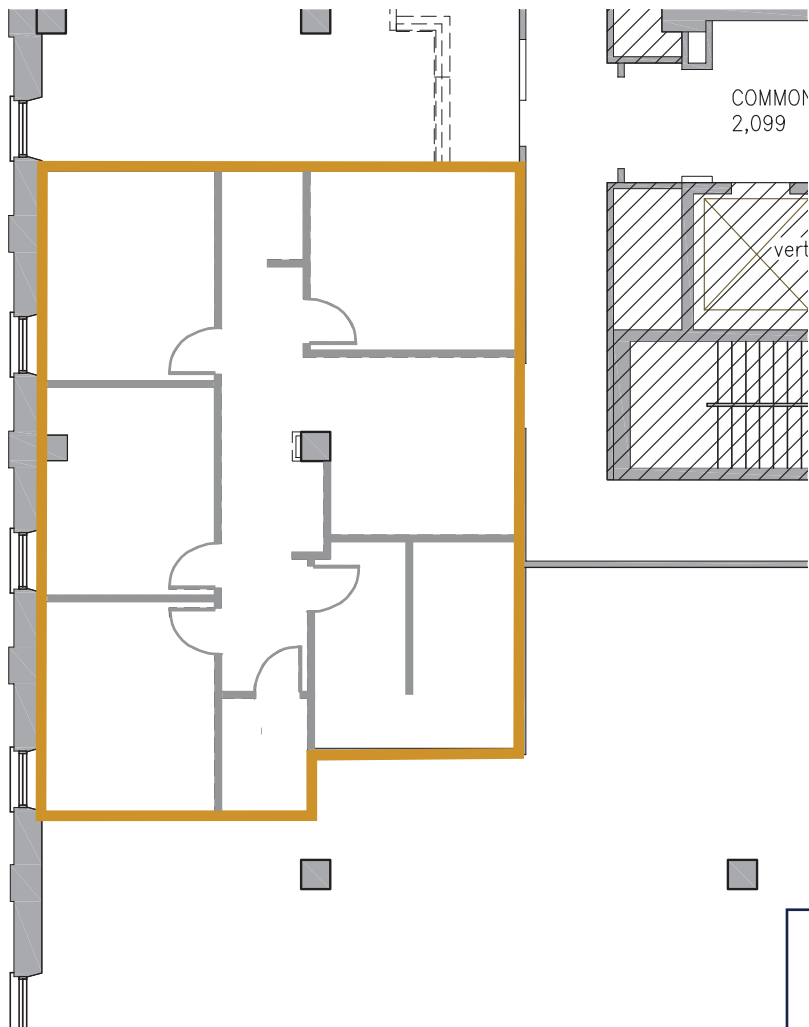
Fourth Floor

3,994 RSF **Available July 1, 2025**



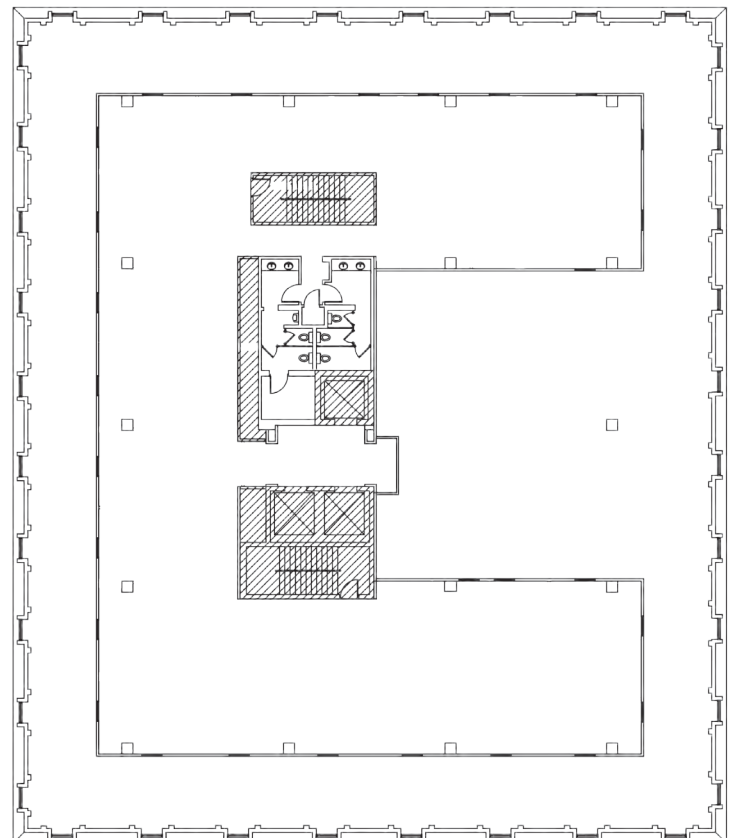
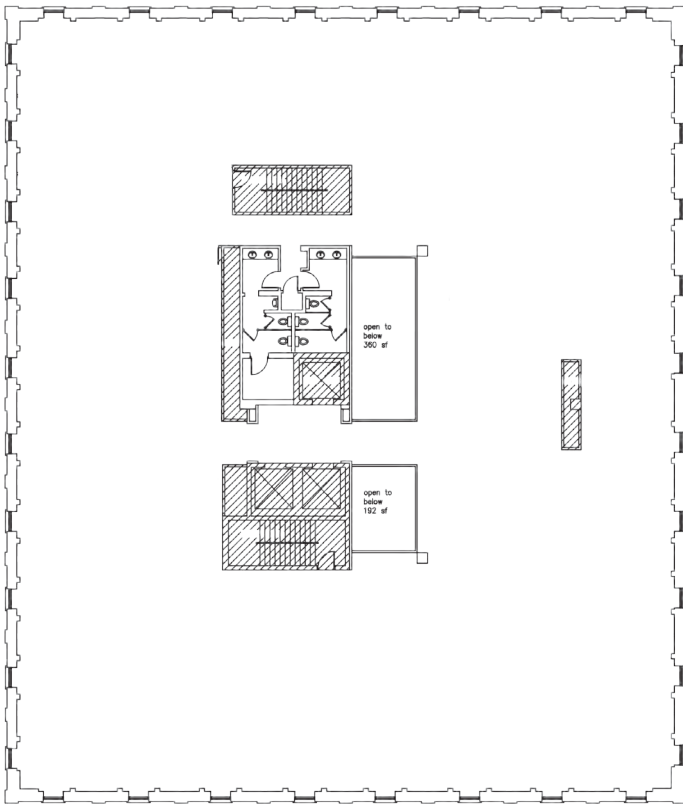
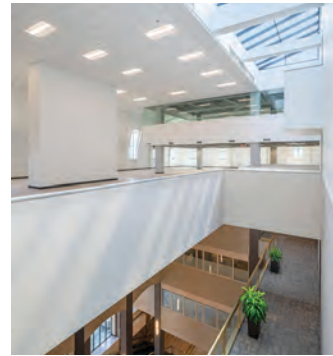
Fourth Floor

1,548 RSF

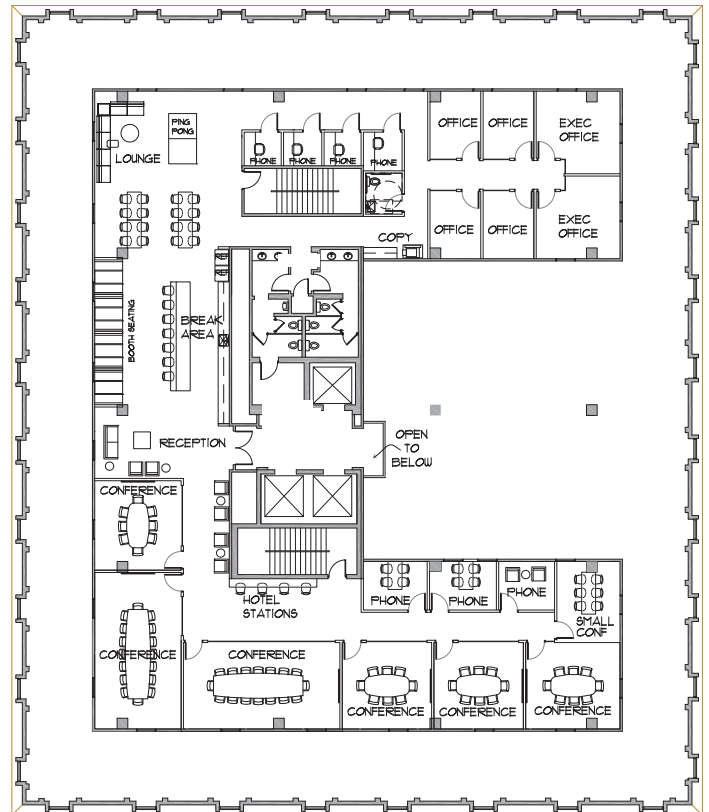
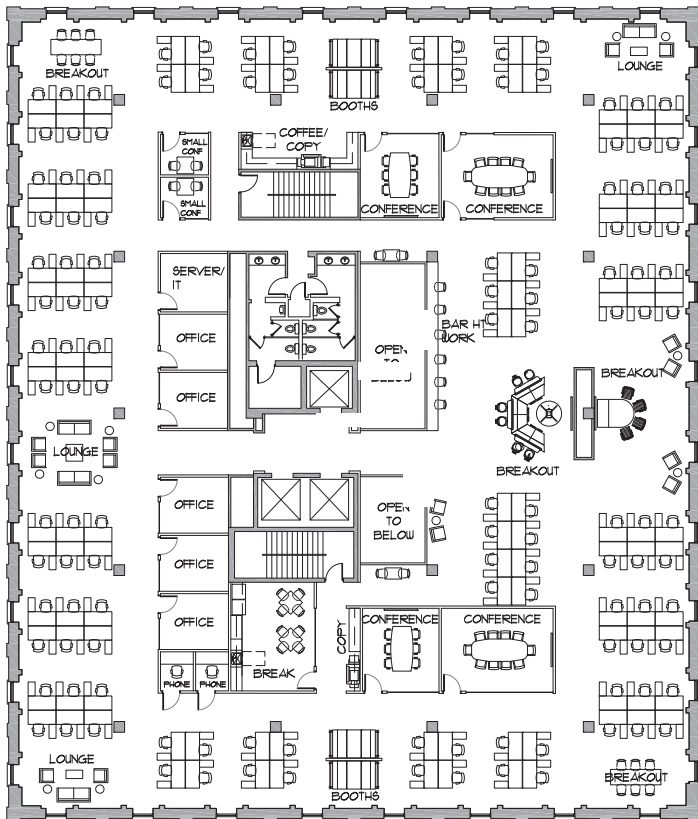


Sixth & Seventh Floor

27, 583 RSF Available Now!

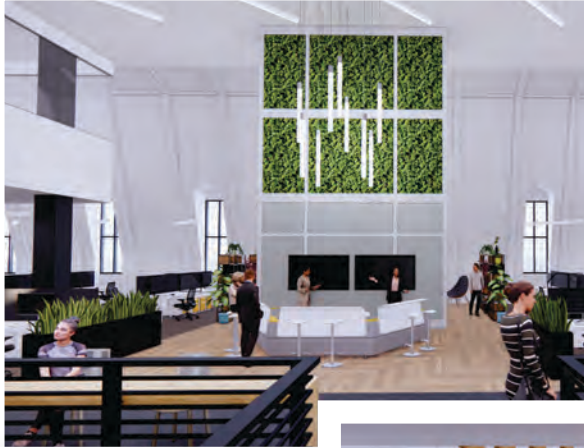


Sixth & Seventh Floor Concept Plans



RENDERINGS

Sixth and Seventh Floor Renovation



PARKING MAP

