



KENWOOD
COMMERCIAL



CROWN ROLLER MILL

OFFICE SPACE FOR LEASE Now Available - 1st, 4th, 6th, 7th floors!

105 S. 5th Avenue, Minneapolis, MN 55401

DETAILS

AVAILABILITY

Available July 1, 2023:
4th Floor: 1,548 RSF
Available on January 1, 2024:
1st Floor: 2,781 RSF SPEC SUITE
4th Floor: 3,994 RSF
Available NOW:
6th-7th Floors: 1,500-27,583 contiguous RSF

NET RENT RATES

\$18.00 - \$25.00 PSF

2023 TAX/OPS

\$13.56 PSF

BUILDING SIZE

98,334 RSF

FLOORS

7

AMENITIES

Updated common areas, expansive outdoor deck

Great views of the Mississippi River, CBD, and Mill District

Located in the historic Whitney Mill Corridor

Close proximity to Minneapolis CBD, Mill Ruins Park, Stone Arch Bridge, Gold Medal Park, *new* Waterworks Park, several award-winning restaurants (including Owamni by the Sioux Chef, Kindee Thai, Smith & Porter, Sawatdee) and the renowned Guthrie Theater

On-site property management

On site and underground parking, adjacent access to multiple municipal ramps



Local Knowledge

Allows us to uncover unique opportunities for our clients in Minneapolis | St. Paul.



Independent Advantage

We provide personalized service and take the time to fully invest in our clients.



Full-Service

From start to finish: we're directly involved every step of the way.

CONTACT US

Michael Doyle

612.242.8820

mdoyle@kenwoodcommercial.com

Nils Snyder

612.240.7967

nsnyder@kenwoodcommercial.com



KENWOOD
COMMERCIAL

CROWN ROLLER MILL

105 S. 5th Avenue, Minneapolis, MN 55401

AREA MAP







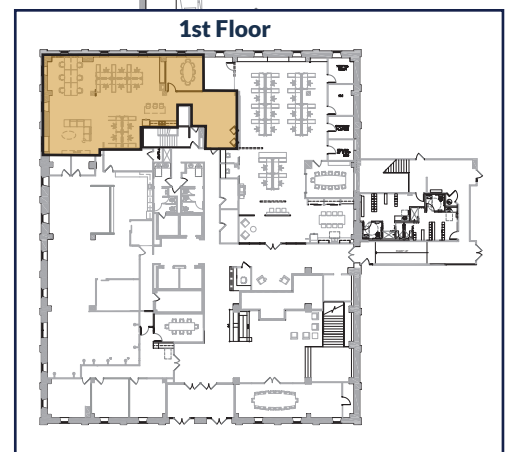
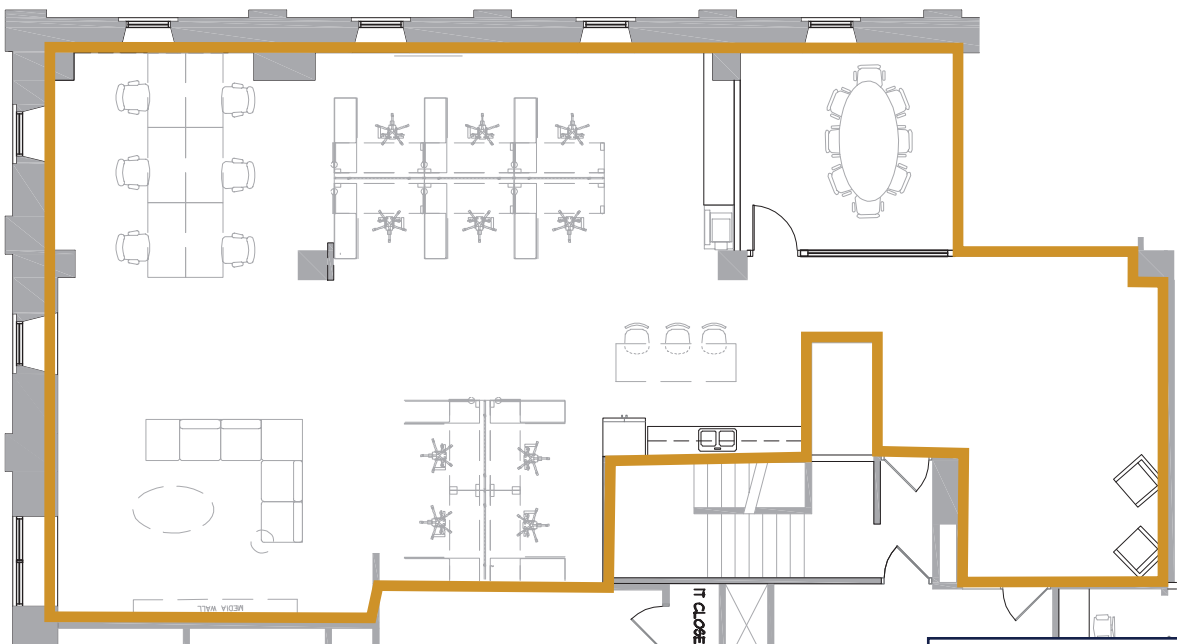
KENWOOD
COMMERCIAL

CROWN ROLLER MILL

105 S. 5th Avenue, Minneapolis, MN 55401

First Floor Spec Suite

2,781 RSF Available January 1, 2024





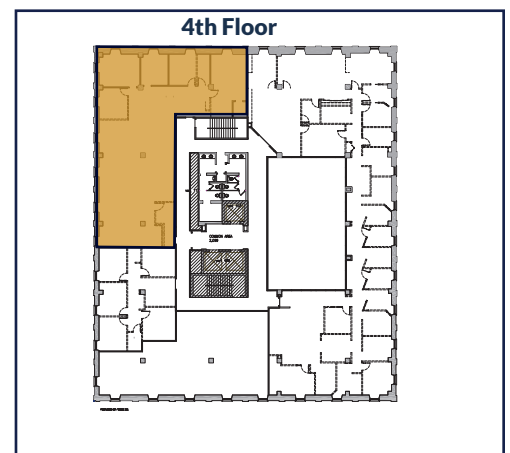
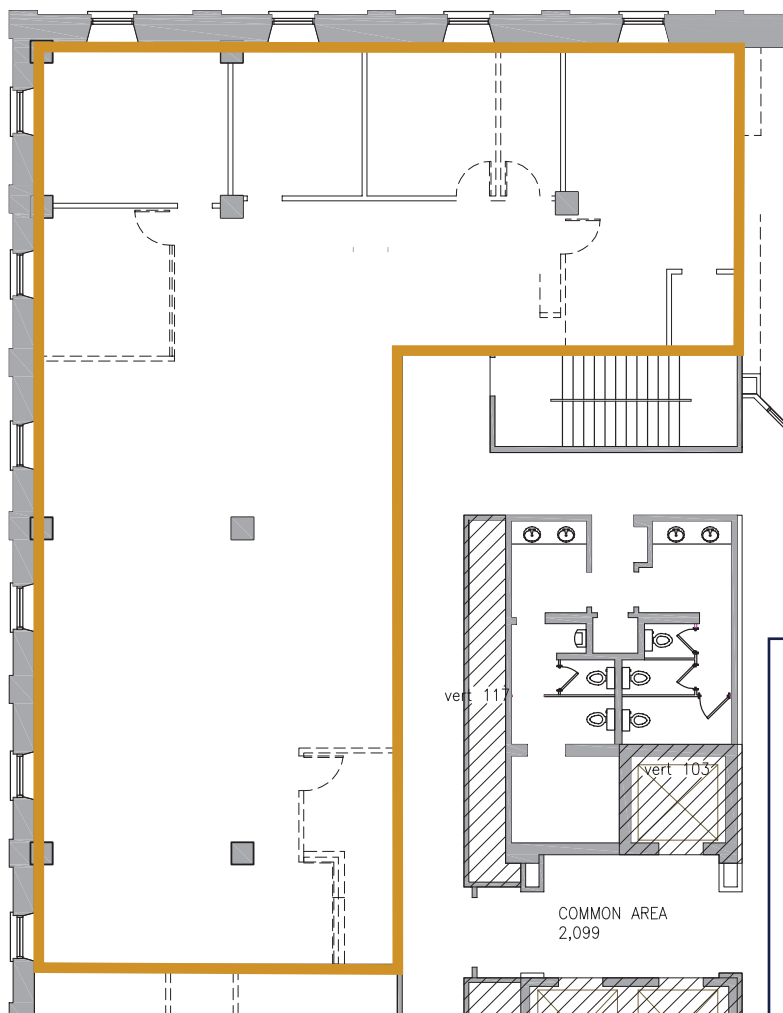
KENWOOD
COMMERCIAL

CROWN ROLLER MILL

105 S. 5th Avenue, Minneapolis, MN 55401

Fourth Floor

3,994 RSF Available January 1, 2024





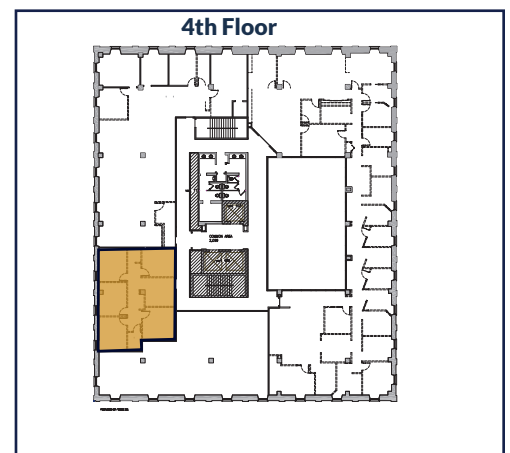
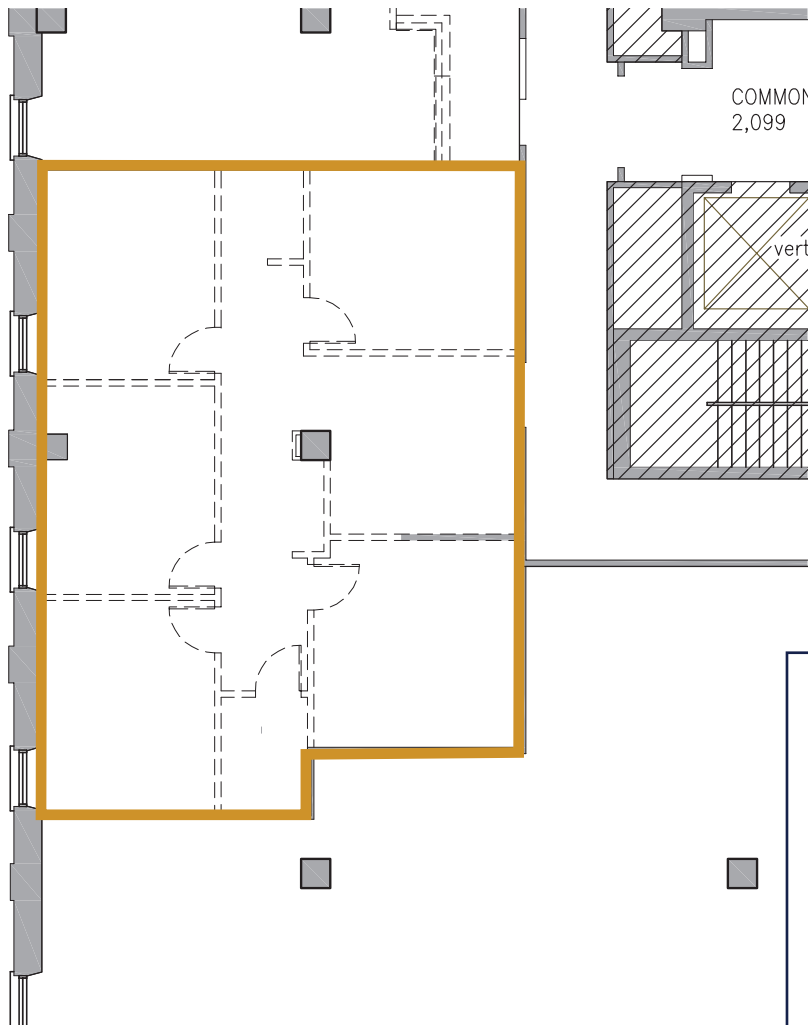
KENWOOD
COMMERCIAL

CROWN ROLLER MILL

105 S. 5th Avenue, Minneapolis, MN 55401

Fourth Floor

1,548 RSF Available July 1, 2023

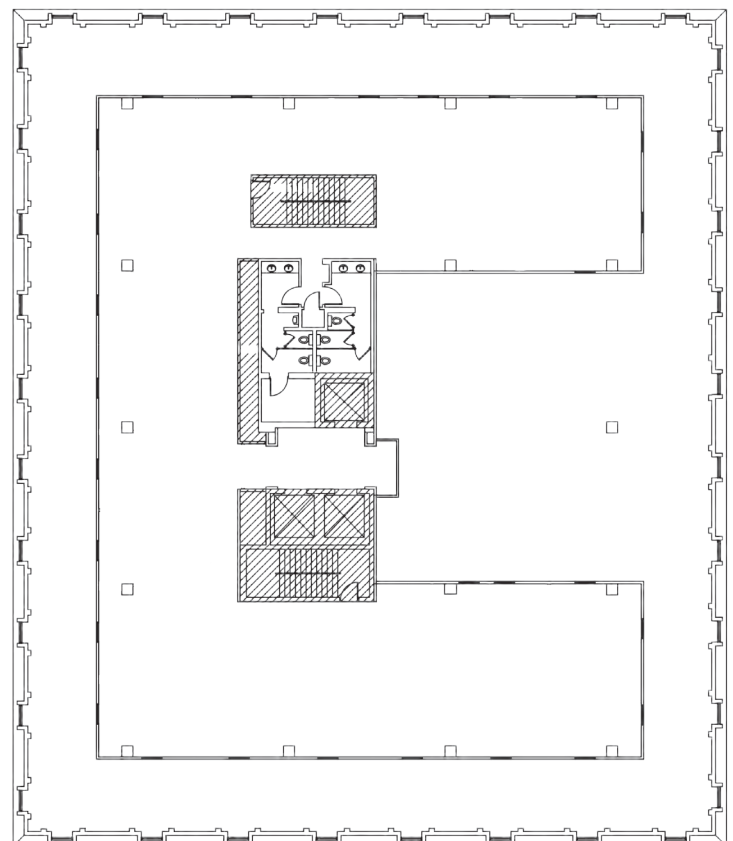
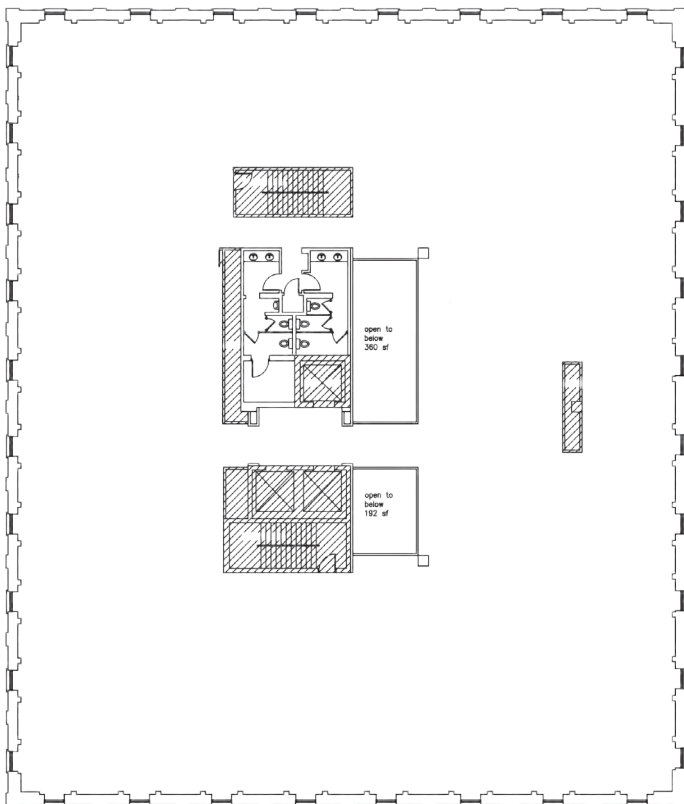
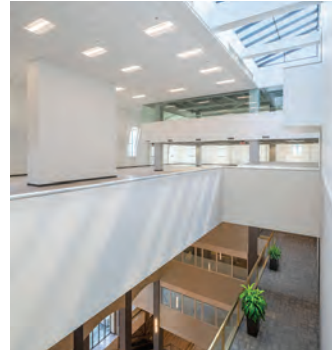




CROWN ROLLER MILL

105 S. 5th Avenue, Minneapolis, MN 55401

Sixth & Seventh Floor 27, 583 RSF Available Now!



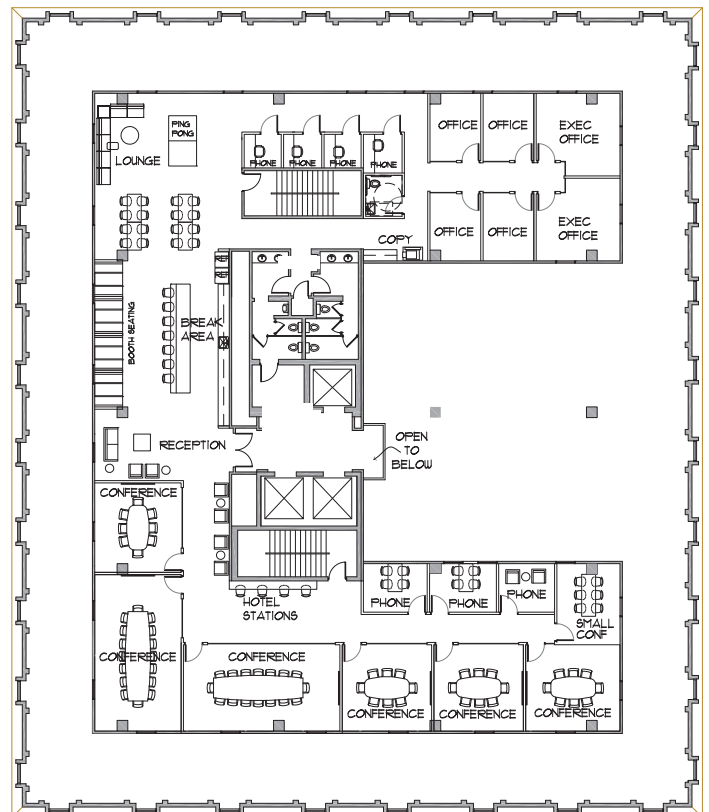
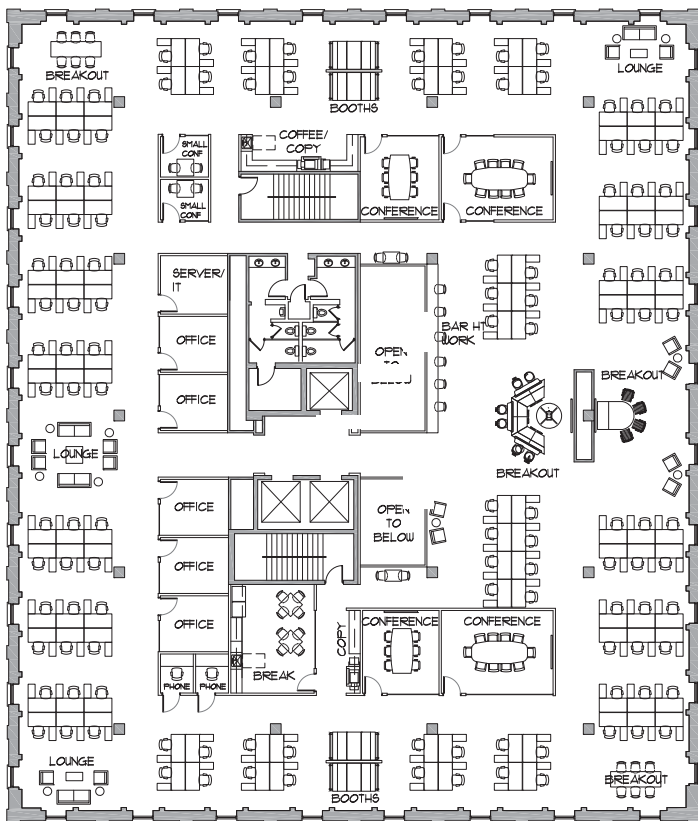


KENWOOD
COMMERCIAL

CROWN ROLLER MILL

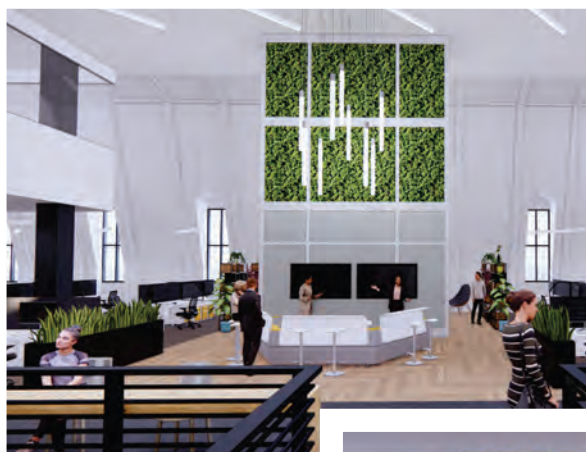
105 S. 5th Avenue, Minneapolis, MN 55401

Sixth & Seventh Floor Concept Plans





RENDERINGS of Sixth and Seventh Floor Renovation





KENWOOD
COMMERCIAL

PARKING MAP

